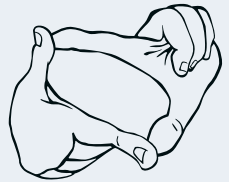


512.884.0962

AUSTIN, TEXAS

CUTTINGEDGECONCRETE.COM

CUTTING EDGE
CONCRETE DESIGN



FLOOR AFTERCARE

MAINTENANCE & CLEANING

To begin with, pay close attention to the high traffic areas. If these areas look much duller than the surrounding areas, and the stain itself starts to look different as well, you've waiting too long to protect your floors. There is a product called "mop-on-wax" (or "mop-on-polish"), and it means just that. You can use a pad applicator or sponge mop to apply. For residential, apply two coats once every year. In between annual polishings, we highly recommend a repolishing of the high traffic areas: front door, back door, hallways and the area at the bottom of staircases. For commercial locations, apply mop-on-wax as often as you like, though do not exceed a frequency of more than every 8 weeks.

For general cleaning, we recommend mopping with warm water—not hot!—and just a touch of Murphy's Oil Soap.

VERY IMPORTANT! DO NOT USE HOT WATER OR ANY PRODUCT WITH AMMONIA OR SOLVENTS.

For your tables and chairs, floor protectors are a must. These are sold at area hardware and home stores. If you have wood tables and chairs, purchase the felt tips that can nail directly into the bottom of the legs. If you have metal furniture, use the adhesive version. An alternative possibility are the clear plastic pieces that rest on the floor with your furniture on top. For plants and other heavy items sitting directly on the floor, purchase the type of adhesive plastic bumpers you might find on the inside of cabinets and under the glass of glass tables. Thick corkboard cut to size is another option. Rugs are a nice touch but never use the two-sided tape to hold it in place. The mesh-type material used to hold rugs in place can leave an imprint on the seal (wax or clear coat).

Place clear plastic mats under animal water dishes and plants that sit directly on the floor that could possibly leak when watered. If not protected, the seal could become a cloudy white due to excess moisture over time.

VERY IMPORTANT! DO NOT USE HOT WATER OR ANY PRODUCT WITH AMMONIA OR SOLVENTS.